

CopyCentre®
265/275

WorkCentre®
265/275

WorkCentre® Pro
265/275

XEROX®

Technology | Document Management | Consulting Services

copy | print | scan | fax | email

Production packed
performance
for the office



Multi-tasking **made easy** for your busy office

Perfect for meeting the multifunction system needs of large office workgroups and light production environments.



*WorkCentre Pro 275
shown with Professional
Finisher*

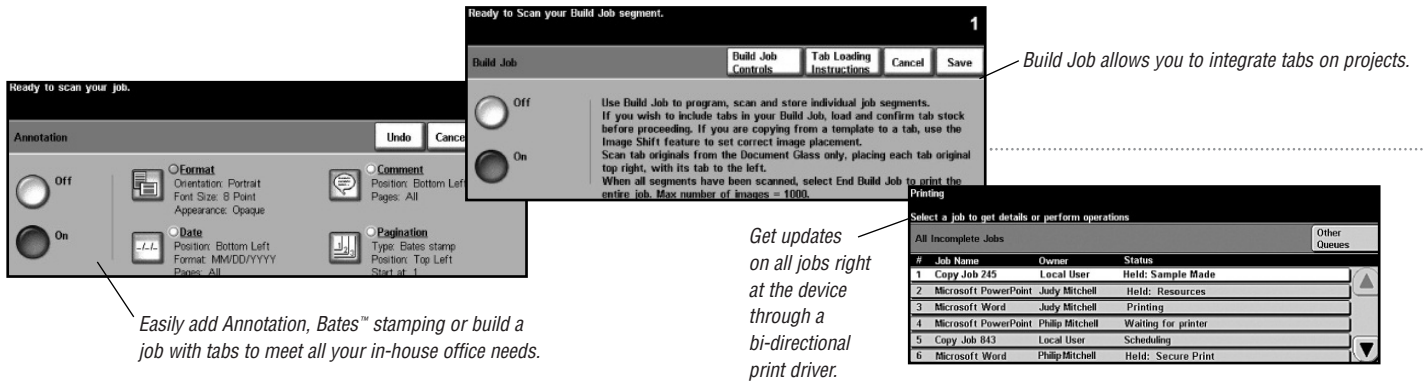
Industry leading performance

Uncompromising digital processing power and robust, smart features – a superb combination found in each of these Xerox systems. The result: quick turn-arounds and great looking outputs you can count on from every job. That's the Xerox standard.

- Copy at up to 65 or 75 ppm – speeds fast enough to keep all your jobs in the fast lane.
- The powerful 1.4 GHz SMart™ Network Controller quickly accepts documents from the network, concurrently processes all jobs received, and keeps the paper path full to avoid delays between jobs.

- Perform multiple tasks simultaneously. You can always access the function you need when you need it – copy, print, fax or scan – even while other jobs are running.
- SMart Job processing eliminates “bottlenecks” using queue management, intuitive bi-directional print drivers, simple web job submission, and our exclusive Print-Around feature that holds any job needing resources and prints the next job in queue.





Easily add Annotation, Bates™ stamping or build a job with tabs to meet all your in-house office needs.

Get updates on all jobs right at the device through a bi-directional print driver.

Advanced finishing offers greater flexibility

Never collate or assemble documents again – our devices do it for you. They can handle a wide variety of media – different paper weights and oversized paper, labels and transparencies.



Sort and collate



Multiposition stapling – Custom position and placement to enhance usability



Hole punch – Options meet worldwide conventions



Booklet – Saddle stitch booklets (up to A3) in-house to reduce costs and eliminate delays



Folding – V-fold brochures up to A3 are printed and ready for distribution

Production-level features

With Xerox, you can count on worry-free, professional operation day in, day out. These systems are designed to be robust yet simple to understand – so users spend less time learning the features and more time putting them into use.

- True 1200 x 1200 dpi PostScript resolution delivers crisp, clean text and graphics.
- Advanced features include annotation, Bates™ stamping, tab print and copy capability, and page level programming from the print driver.
- The robust Build Job function enables page level programming for different pages in a document, including tabs and two-sided, and then lets you select and proof individual sections as the job is built.
- Bi-directional communication provides updates on all your print jobs from the device, your desktop, or even over the Internet. System alerts immediately notify you of any problems – and how to fix them.
- Powerful finishing capabilities let you collate, fold and assemble professional looking documents in-house.



Smart choice

WorkCentre and WorkCentre Pro systems come standard with advanced device management software that makes it easier to keep your network in check.

- CentreWare® Web software manages entire enterprise-wide print environments regardless of manufacturer. Keep closer tabs on your system to ensure everything runs smoothly.
- CentreWare® Internet Services software makes it easy to remotely set up, monitor and manage your Xerox device from any workstation. You can even submit jobs over the web!
- Xerox Standard Accounting software provides job-based accounting features for greater cost control of printing, copying, faxing and scanning.
- Innovative reliability features predict when components need replacing, helping prevent costly downtime. Easy-to-replace SMart Kit™ components offer the convenience of instant device availability.
- SMart eSolutions offers hassle-free, secure administration of Xerox devices for automatic meter reads.
- Desktop management software integrates scanned information, making it easy to edit, organise and archive documents digitally.
- The WorkCentre and WorkCentre Pro 265/275 products have received the Common Criteria Certification from the National Information Assurance Partnership. The enhanced features have been submitted for re-certification. Their robust security features let you restrict access, manage usage and ensure confidentiality.

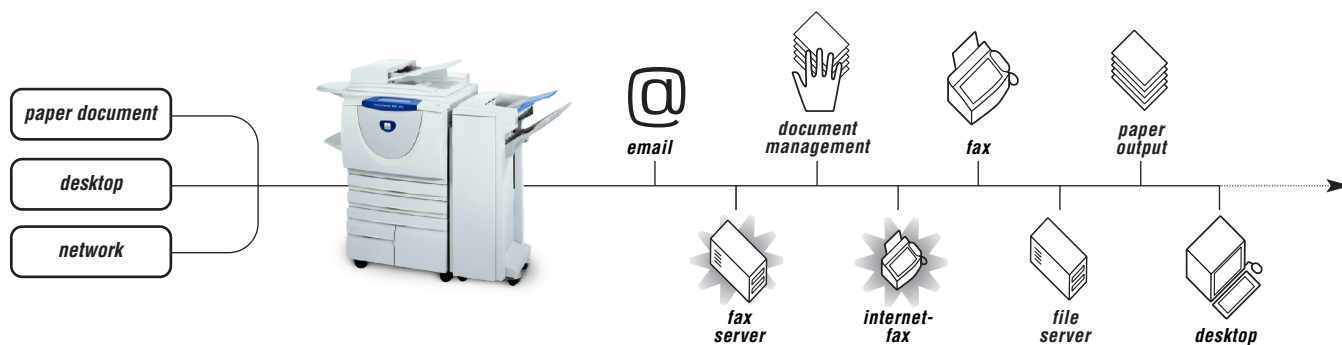


Scan to PC Desktop® lets you move documents into word processing, spreadsheets and database applications for editing, merging, distribution and storage... saving time, effort and money.

Use FreeFlow™ SMARTsend™ software and your multifunction system to scan paper documents into digital form and distribute them to multiple destinations in a single scan.

A range of software solutions enable you to share and store documents faster and easier than ever before.

- Exclusive SMARTsend™ scanning software option lets you send documents to multiple destinations – email, folders, or other devices – from a single scan, using a pre-set workflow. LDAP capability can even integrate your network address book.
- Xerox Extensible Interface Platform™ (EIP) provides a versatile development platform for system integrators and Xerox Alliance Partners. With EIP they can create custom applications to improve the user experience and minimise time spent at the device.
- The Xerox SecureAccess® option gives you an integrated, secure, and convenient method of accessing your multifunction system: a simple swipe of an ID card. SecureAccess also provides Follow-You™ printing, allowing you to release print jobs at any SecureAccess-enabled device.
- An array of Xerox Alliance Partner solutions extends the value of your WorkCentre Pro even further with advanced accounting, email, faxing and scanning capabilities.



Go from paper to digital to anywhere

Transform paper to digital files, then distribute them anywhere – in any format. Or just store them on the network for your next big meeting. It's up to you.

Power-packed solutions...

From digital copiers to copier-printers and advanced multifunctional systems, Xerox has the right answer for all your office needs. By combining powerful digital devices with sophisticated device-management software, these systems deliver the optimum performance required in today's fast-paced workplace. Easy-to-use features allow multiple tasks to be performed simultaneously, while a range of upgrades offer professional-level document finishing options.

CopyCentre® 265/275

copier



A high performance A3 copier in a small package

It's fast. It's reliable. And it's easy to operate. This digital copier gives you all the essentials. Plus more. Enjoy high-quality output with every job – and flexible finishing options.

- Fast 75 ppm scanning plus scan-ahead ability keeps projects moving even while copies are outputting.
- Industry leading annotation, Bates™ stamping and copy on tabs.
- Powerful Build Job capabilities simplify complex document creation.
- Optional two-line fax lets you send and receive at the same time.
- Affordable output options include 2,000 or 3,000-sheet finishing, hole punch, booklet-making, v-fold and convenience stapling.
- Upgradeable, so you can add multifunction capabilities as your needs grow.

WorkCentre® 265/275

copier-printer



Multifunction system essentials, attractively priced

For the next step up in functionality, choose WorkCentre. This device adds network printing to your capabilities. So now you can enjoy effortless copying and printing in one value-packed solution.

- New SMart Network Controller for powerful, efficient printing.
- Unparalleled multi-tasking power lets you perform any number of jobs, using all enabled functions at once – RIP, receive, programme ahead, queue processing and transmit.
- Xerox Standard Accounting tracks copy, print, fax and scan jobs.
- Optional walkup fax with LAN fax and scan to email for essential multifunction capabilities.
- Upgradeable to WorkCentre Pro.

WorkCentre® Pro 265/275

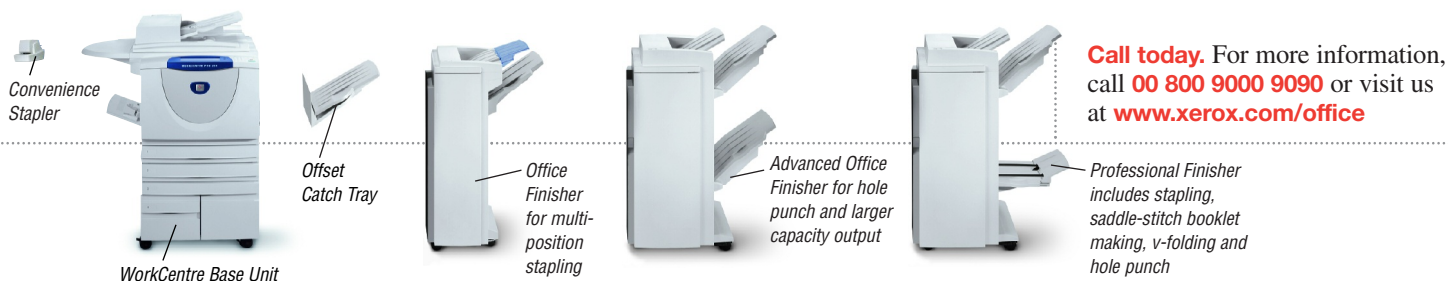
advanced multifunction system



Advanced functionality streamlines your workflow

Scan, fax, print, copy. Do it all with the WorkCentre Pro. It's the most advanced multifunction system with an array of document distribution options. Plus, you can add customised software to further leverage your investment. It makes perfect business sense.

- Extensive fax capabilities – options include walkup fax with LAN fax, Internet fax or Network Server fax.
- Multiple scanning software options – FreeFlow™ Scan to PC Desktop® and FreeFlow™ SMARTsend™.
- Advanced fax, scanning and network accounting solutions from Xerox Alliance Partners.



Configurations	CopyCentre 265	CopyCentre 275	WorkCentre 265	WorkCentre 275	WorkCentre Pro 265	WorkCentre Pro 275
Speed	Up to 65 ppm	Up to 75 ppm	Up to 65 ppm	Up to 75 ppm	Up to 65 ppm	Up to 75 ppm
Duty Cycle	265: Up to 250,000 pages/mo.; 275: Up to 300,000 pages/mo.					
Device Memory	256 MB std / 768 MB max		384 MB std / 1024 MB max		768 MB std / 1024 MB max	
Paper Handling	75-sheet Duplex Automatic Document Handler (DADH), 100-sheet Bypass Tray; Two 550-sheet user-adjustable front loading Paper Trays; 3,600-sheet High Capacity Paper Trays (1,600- and 2,000-sheet drawers); Total up to 4,800 sheets					
Finishing Options	Offset Catch Tray: 300 sheets; Office Finisher: 50-sheet, multi-position stapling, 2,000 + 250-sheet trays; Advanced Office Finisher: 50-sheet, multi-position stapling, 1,500 + 1,500 + 250-sheet trays, 2-hole punch (4-hole option); Professional Finisher: 50-sheet, multi-position stapling, 1,500 + 250-sheet trays, 2-hole punch (4-hole option), saddle-stitch booklet making, v-folding; Convenience Stapler: 50 sheets					
Copy	As fast as 2.7 seconds					
First copy out time	As fast as 2.7 seconds					
DADH Scan Speed	75 spm					
Copy Resolution	600 x 600 x 8 dpi input / 1200 x 4800 dpi interpolated output					
Copy Features	Basic Copy Features: Automatic 2-sided, auto reduction and enlargement, auto paper select, auto tray switching, image quality enhancements; Output Features: Transparencies, booklet creation, multi-up, covers, annotation, build job, inserts and tab copying, sample set, heavy-weight paper					
Print Processor	NA		1.4GHz AMD Athlon dedicated / 80 GB Hard Drive shared			
Connectivity	NA		Ethernet 10/100 BaseT, IEEE802.5 (Token ring) [via adapter], wireless ethernet (IEEE802.11a/b/g) [via third party adapter]			
PDL Support	NA		PCL6, PCL5e, PostScript 3 emulation with direct print TIFF, PDF (optional) LCDS, SCS, XES and IPDS via third party transforms		PCL6, PCL5e, PostScript 3 emulation, direct print TIFF, PDF, LCDS, SCS, XES and IPDS via third party transforms	
Print Resolution	NA		600 x 600 dpi		Up to 1200 x 1200 interpolated dpi	
Print Features	NA		Delay-, sample-, secure- and store-print; simultaneous rip, receive, programme-ahead, queue-process and transmit; bi-directional print drivers; page-level programming; tab printing; embedded web server for remote control/monitor/setup; job monitoring at device and at desktop			
Fax Fax Options	Walkup Fax (33.6kbps, one-line [32 MB] and two-line [256 MB] options)		Walkup Fax (33.6kbps, one-line [32 MB] and two-line [256 MB] options) with LAN Fax		Walkup Fax (33.6kbps, one-line [32 MB] and two-line [256 MB] options) with LAN Fax, Internet Fax, Network Server Fax	
Scan Scan Options	NA		Scan to Email, (128 MB RAM) (LDAP, Authentication)		Network Scanning with Email (LDAP, Authentication), Scan to Home, Scan to Mailbox as standard, FreeFlow Scan to PC Desktop and FreeFlow SMARTsend	
Security Options	Fax Security		Fax Security, Secure Print, 802.1x, HTTPS (SSL), SNMP V3, IPsec, Network Authentication, Device Access Password Protection, IP Filtering, Audit Log, Disk Encryption-for Store Print and Scan to Mailbox features on WorkCentre Pro. Optional: Disk Image Overwrite, SecureAccess			
Accounting Options	Internal Auditor - Copy		Internal Auditor - Copy; Xerox Standard Accounting - Copy, Print, Fax, Scan		Internal Auditor - Copy; Xerox Standard Accounting - Copy, Print, Fax, Scan; Optional Job Based Accounting (3rd Party)	
Other Options	Hole punching (with Office and Advanced Finishers), Shelf Kit, 256 MB Pre-Collation Memory, Foreign Interface Device, Xerox Copier Assistant, WorkCentre/WorkCentre Pro Upgrade Kits		Hole punching (with Office Finisher), 256 MB Pre-Collation Memory, Foreign Interface Device, Xerox Copier Assistant, Postscript 3 Emulation / MAC Ethertalk, WorkCentre Pro Upgrade Kit		Hole punching (with Office Finisher), Foreign Interface Device, Xerox Copier Assistant, USB 2.0 (IEEE1284) / Parallel Port kit, Fax / Scan / Accounting Partner Solutions	

